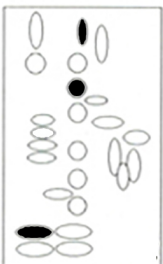
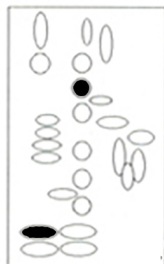


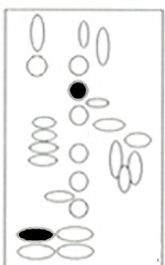
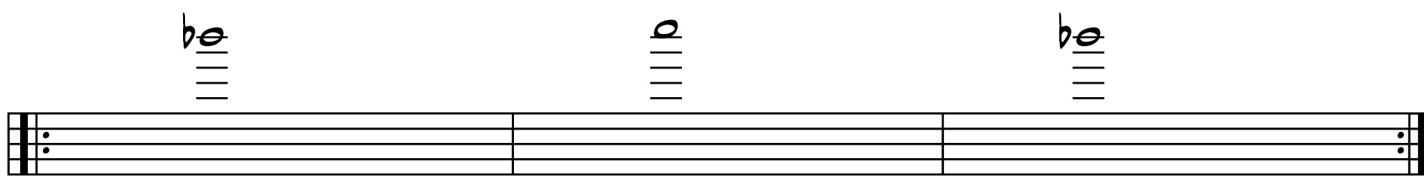
B-Flat



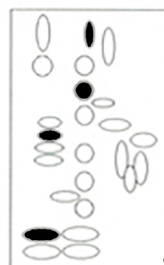
B-Natural



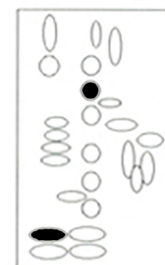
B-Flat



B-Flat



C-Natural



B-Flat

I like the tone color when I use the F#/C# key instead of the A-Flat/E-Flat Key. Always test what keys work best for you..

**CLARINET HIGH REGISTER ALTERNATE FINGERING STUDIES BY RHEUBEN ALLEN**